



MONTHLY SUMMARY OF STATISTICS

VICTORIA

EMBARGO: 11:30AM (CANBERRA TIME) FRI 20 NOV 1998

CONTENTS

	<i>page</i>
Notes	2
Selected features	3
TABLES	
List of tables	4
Demography	5
Labour	6
Wages	9
Prices	10
Meat production	11
Building	12
Finance	15
Retail	16
Trade	17
Tourism	18

- For more information about these and related statistics, contact Information Services on 03 9615 7755 or refer to the back cover of this publication.

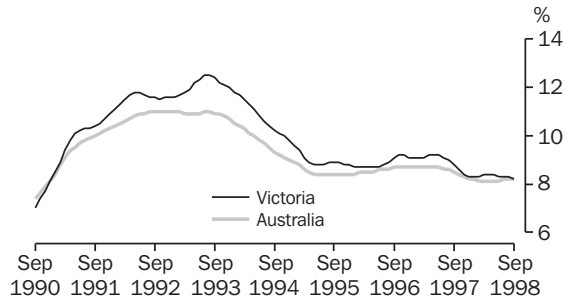
NOTES

FORTHCOMING ISSUES	<table border="0" style="width: 100%;"> <thead> <tr> <th style="text-align: left; padding-right: 20px;"><i>ISSUE</i></th> <th style="text-align: left;"><i>RELEASE DATE</i></th> </tr> </thead> <tbody> <tr> <td>November 1998</td> <td>18 December 1998</td> </tr> <tr> <td>December 1998</td> <td>20 January 1998</td> </tr> <tr> <td>January 1999</td> <td>22 February 1999</td> </tr> <tr> <td>February 1999</td> <td>22 March 1999</td> </tr> <tr> <td>March 1999</td> <td>22 April 1999</td> </tr> <tr> <td>April 1999</td> <td>21 May 1999</td> </tr> </tbody> </table>	<i>ISSUE</i>	<i>RELEASE DATE</i>	November 1998	18 December 1998	December 1998	20 January 1998	January 1999	22 February 1999	February 1999	22 March 1999	March 1999	22 April 1999	April 1999	21 May 1999
<i>ISSUE</i>	<i>RELEASE DATE</i>														
November 1998	18 December 1998														
December 1998	20 January 1998														
January 1999	22 February 1999														
February 1999	22 March 1999														
March 1999	22 April 1999														
April 1999	21 May 1999														
ABOUT THIS PUBLICATION	<p>The aim of this publication is to provide a range of the latest statistics available at the end of each month of issue. Consequently, the dates and periods shown are not always the same for each table, but are in each case the latest figures available at that time.</p>														
SEASONAL ADJUSTMENT	<p>Seasonal adjustment is a means of removing the estimated effects of normal seasonal variations from economic time series so that the effects of other influences are obvious. Seasonal variations are the systematic (though not necessarily regular) intra-year movements of economic time series. These are often the result of non-economic phenomena, such as climatic changes and regular religious festivals e.g. Christmas and Easter.</p>														
TREND ESTIMATE	<p>Smoothing seasonally adjusted series produces a measure of trend by removing the impact of the irregular component of the series. The trend estimates are derived by applying a 13-term Henderson weighted moving average to the respective seasonally adjusted series. Readers are reminded that trend estimates are subject to revision as subsequent months' data become available.</p>														
SYMBOLS AND OTHER USAGES	<p>n.a. not available n.e.c. not elsewhere classified n.p. not available for publication but included in totals where applicable n.y.a. not yet available p preliminary—figure or series subject to revision r figure or series revised since previous issue * estimate has a relative standard error greater than 25% and is therefore subject to sampling variability too high for most practical uses . . not applicable — nil or rounded to zero</p>														

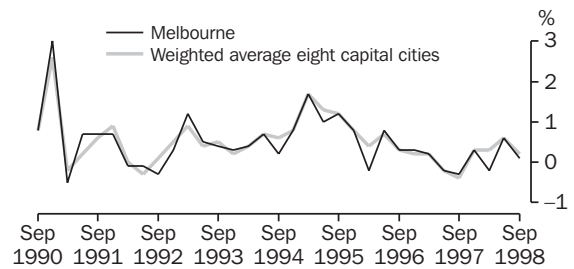
Zia Abbasi
Regional Director
Victoria

SELECTED FEATURES

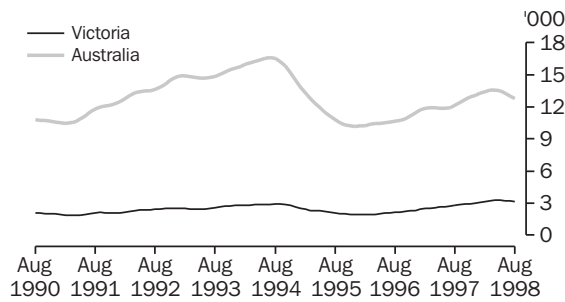
UNEMPLOYMENT RATE, Trend— Monthly



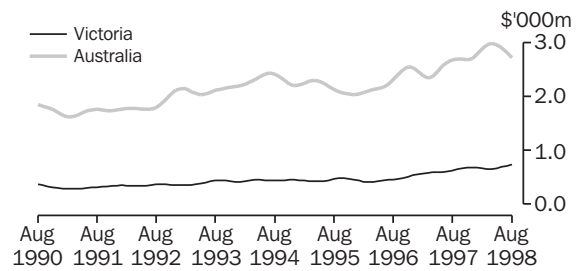
CONSUMER PRICE INDEX, Change from previous quarter



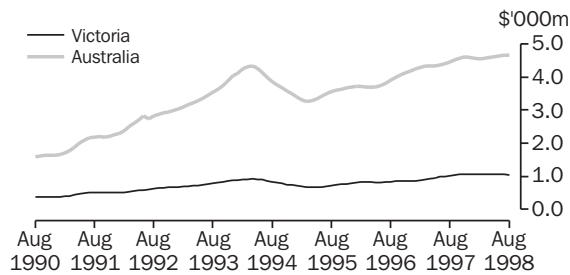
NEW DWELLING UNITS APPROVED, Trend— Monthly



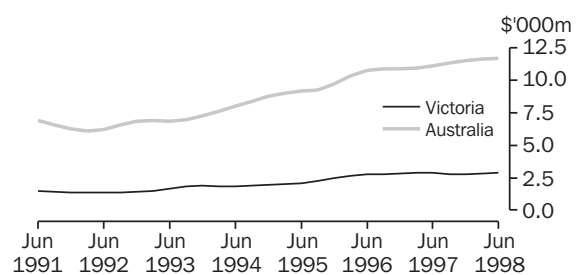
VALUE OF ALL BUILDINGS APPROVED, Trend— Monthly



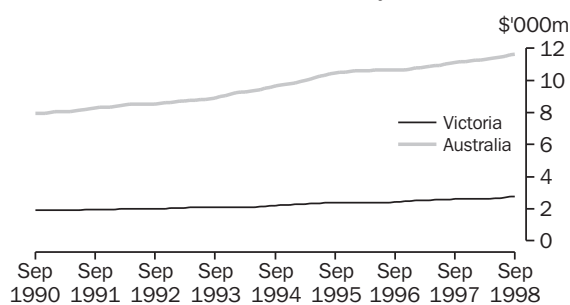
TOTAL VALUE OF SECURED HOUSING FINANCE COMMITMENTS TO INDIVIDUALS, Trend— Monthly



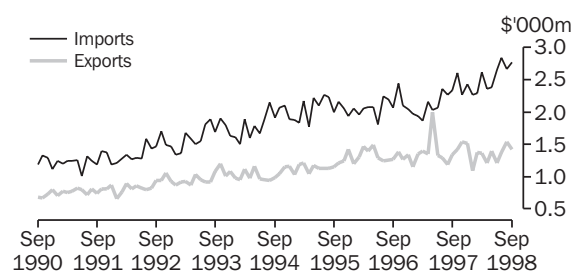
PRIVATE NEW CAPITAL EXPENDITURE, Trend— Quarterly



RETAIL TURNOVER, Trend— Monthly



MERCHANDISE IMPORTS AND EXPORTS, Original— Monthly



LIST OF TABLES

		Page
DEMOGRAPHY	1 Estimated resident population	5
	2 Births, deaths, marriages and divorces	5
LABOUR	3 Labour force status of the civilian population aged 15 years and over	6
	4 Employed persons, by industry	7
	5 Job vacancies	8
	6 Industrial disputes causing stoppage of work	8
WAGES	7 Average weekly earnings of employees	9
PRICES	8 Consumer Price Index—Melbourne	10
	9 Price Index of Materials Used in Building—Melbourne	10
MEAT PRODUCTION	10 Livestock slaughterings	11
	11 Meat production	11
BUILDING	12 Building approvals—Melbourne and Victoria	12
	13 New houses and other residential buildings, number of dwelling units	13
	14 Value of building	14
FINANCE	15 Private new capital expenditure, by selected industries and type of asset	15
	16 Commercial finance commitments	15
	17 Secured housing finance commitments, dwelling units	16
RETAIL	18 Retail turnover, by industry (excluding motor vehicles, parts, petrol, etc.)	16
TRADE	19 Exports and imports, by sections of the Australian Export and Import Classifications	17
	20 Overseas trade, major trading partners	17
	21 Value of overseas trade—Victoria and Australia	18
TOURISM	22 Tourist accommodation	18

1

ESTIMATED RESIDENT POPULATION

Period	At end of period			Increase during period		Melbourne Statistical Division at 30 June(a)
	Males	Females	Persons	Natural	Total	
	'000	'000	'000	'000	'000	'000
1994-95	2 233.4	2 284.0	4 517.4	31.3	29.8	3 243.7
1995-96	2 252.6	2 307.5	4 560.2	28.5	42.8	3 283.3
1996-97 p	2 274.3	2 330.9	4 605.1	28.3	45.0	3 321.7
1996						
December qtr p	2 262.5	2 318.8	4 581.3	7.1	10.2	..
1997						
March qtr p	2 269.9	2 326.2	4 596.1	7.6	14.8	..
June qtr p	2 274.3	2 330.9	4 605.1	7.3	9.1	..
September qtr p	2 280.4	2 337.0	4 617.4	6.4	12.3	..
December qtr p	2 284.9	2 342.4	4 627.3	7.7	9.8	..
1998						
March qtr p	2 297.7	2 352.7	4 648.4	7.8	21.1	..

(a) Based on the 1996 Statistical Local Area boundaries.

Source: Australian Demographic Statistics (Cat. no. 3101.0) (quarterly).

2

BIRTHS, DEATHS, MARRIAGES AND DIVORCES

Period	Registrations				Annual rate per 1,000 of mean estimated resident population				
	Births	Deaths (including infant deaths)	Marriages	Divorces	Births	Deaths	Marriages	Divorces	Infant deaths per 1,000 live births
	no.	no.	no.	no.	rate	rate	rate	rate	rate
1994-95	63 617	32 271	26 831	11 602	14.14	7.17	5.96	2.58	4.95
1995-96	61 324	32 827	26 117	12 002	13.51	7.23	5.75	2.64	5.30
1996-97 p	61 187	32 876	25 664	13 046	13.36	7.18	5.60	2.85	4.53
1996									
December qtr	14 987	7 852	7 723	3 398
Year—1996	60 751	32 901	26 074	12 491	13.32	7.21	5.72	2.74	5.20
1997									
March qtr p	15 012	7 434	8 101	2 810
June qtr p	15 643	8 376	6 000	3 308
September qtr p	15 671	9 225	3 822	3 164
December qtr p	15 595	7 908	7 533	3 181
Year—1997	61 921	32 943	25 456	12 463	13.45	7.15	5.53	2.71	4.88
1998									
March qtr p	15 055	7 269	8 531	2 663

Source: Demography, Victoria (Cat. no. 3311.2) (annual). Australian Demographic Statistics (Cat. no. 3101.0) (quarterly).

3

LABOUR FORCE STATUS OF THE CIVILIAN POPULATION AGED 15 YEARS AND OVER

Month	Employed		Unemployed looking for work			Labour force	Not in labour force	Civilian population 15 years and over	Unemployment rate	Participation rate
	Full-time Total	Total	Full-time	Part-time	Total					
	'000	'000	'000	'000	'000	'000	'000	'000	%	%
MALES										
1997										
July	1 039.7	1 185.2	98.3	14.0	112.3	1 297.5	483.0	1 780.6	8.7	72.9
August	1 022.4	1 168.7	100.2	15.2	115.4	1 284.0	498.5	1 782.5	9.0	72.0
September	1 037.0	1 189.1	100.8	22.6	123.5	1 312.6	471.9	1 784.5	9.4	73.6
October	1 043.0	1 195.9	85.9	15.2	101.1	1 297.0	489.5	1 786.5	7.8	72.6
November	1 048.8	1 194.0	89.5	15.4	104.8	1 298.8	489.6	1 788.4	8.1	72.6
December	1 064.4	1 220.2	86.4	23.1	109.5	1 329.7	460.7	1 790.4	8.2	74.3
1998										
January	1 054.8	1 185.7	102.0	20.4	122.4	1 308.1	484.2	1 792.2	9.4	73.0
February	1 065.0	1 202.5	96.1	20.6	116.7	1 319.2	474.8	1 794.0	8.8	73.5
March	1 055.8	1 206.2	97.6	19.3	116.9	1 323.1	472.7	1 795.8	8.8	73.7
April	1 060.8	1 212.6	90.2	18.4	108.5	1 321.1	476.8	1 798.0	8.2	73.5
May	1 060.1	1 217.7	93.7	16.0	109.7	1 327.4	472.7	1 800.1	8.3	73.7
June	1 048.7	1 213.3	92.3	12.4	104.7	1 318.0	484.2	1 802.2	7.9	73.1
July	1 055.8	1 212.5	89.2	13.5	102.7	1 315.2	488.8	1 804.1	7.8	72.9
August	1 046.0	1 202.0	87.4	16.4	103.8	1 305.8	500.0	1 805.9	8.0	72.3
September	1 069.5	1 231.2	88.0	18.3	106.3	1 337.6	470.2	1 807.7	7.9	74.0
FEMALES										
1997										
July	523.1	917.8	56.3	25.7	82.0	999.8	859.3	1 859.0	8.2	53.8
August	498.5	891.5	57.8	29.0	86.7	978.2	882.7	1 861.0	8.9	52.6
September	520.4	932.9	59.1	29.0	88.1	1 021.0	841.9	1 862.9	8.6	54.8
October	511.9	916.1	55.4	27.3	82.8	998.8	866.0	1 864.8	8.3	53.6
November	505.6	922.1	53.2	26.5	79.7	1 001.8	865.0	1 866.8	8.0	53.7
December	530.2	934.8	55.9	26.3	82.2	1 016.9	851.8	1 868.7	8.1	54.4
1998										
January	513.3	893.6	60.9	28.5	89.4	983.0	887.4	1 870.5	9.1	52.6
February	526.6	387.3	62.9	27.9	90.8	1 004.6	867.5	1 872.2	9.0	53.7
March	520.0	925.3	61.0	32.6	93.5	1 018.9	855.0	1 873.9	9.2	54.4
April	531.2	937.5	57.4	29.0	86.3	1 023.8	852.4	1 867.2	8.4	54.6
May	522.7	935.1	55.3	24.4	79.6	1 014.7	863.7	1 878.4	7.8	54.0
June	523.2	941.4	52.9	30.8	83.6	1 025.1	855.6	1 880.7	8.2	54.5
July	535.5	940.4	53.8	28.9	82.8	1 023.2	859.4	1 882.6	8.1	54.4
August	535.9	949.7	50.3	30.9	81.2	1 030.9	853.6	1 884.5	7.9	54.7
September	533.3	953.2	58.2	31.8	90.1	1 043.3	843.1	1 886.4	8.6	55.3
PERSONS										
1997										
July	1 562.8	2 103.0	154.6	39.7	194.3	2 297.3	1 342.3	3 639.6	8.5	63.1
August	1 520.9	2 060.2	157.9	44.2	202.1	2 262.3	1 381.2	3 643.5	8.9	62.1
September	1 557.5	2 122.1	159.9	51.7	211.6	2 333.6	1 313.8	3 647.4	9.1	64.0
October	1 554.8	2 111.9	141.1	42.5	183.9	2 295.8	1 355.5	3 651.3	8.0	62.9
November	1 554.4	2 116.1	142.7	41.8	184.5	2 300.6	1 354.6	3 655.2	8.0	62.9
December	1 594.6	2 155.0	142.3	49.3	191.7	2 346.7	1 312.5	3 659.2	8.2	64.1
1998										
January	1 568.1	2 079.3	162.8	48.9	211.8	2 291.1	1 371.6	3 662.7	9.2	62.6
February	1 591.6	2 116.3	159.0	48.5	207.5	2 323.8	1 342.4	3 666.2	8.9	63.4
March	1 575.8	2 131.6	158.5	51.9	210.4	2 342.0	1 327.7	3 669.7	9.0	63.8
April	1 592.0	2 150.0	147.6	47.3	194.9	2 344.9	1 329.2	3 674.1	8.3	63.8
May	1 582.8	2 152.8	149.0	40.3	189.3	2 342.1	1 336.4	3 678.5	8.1	63.7
June	1 571.9	2 154.8	145.2	43.2	188.3	2 343.1	1 339.8	3 682.9	8.0	63.6
July	1 591.3	2 152.9	143.1	42.5	185.5	2 338.4	1 348.2	3 686.7	7.9	63.4
August	1 581.9	2 151.7	137.7	47.3	185.0	2 336.7	1 353.7	3 690.4	7.9	63.3
September	1 602.8	2 184.5	146.2	50.2	196.4	2 380.8	1 313.3	3 694.1	8.2	64.4

Source: Labour Force, Victoria (Cat. no. 6202.2) (quarterly).

4

EMPLOYED PERSONS, BY INDUSTRY

	May 1997	Aug 1997	Nov 1997	Feb 1998	May 1998	Aug 1998
<i>Industry division</i>	'000	'000	'000	'000	'000	'000
MALES						
Agriculture, forestry and fishing	70.2	58.7	55.9	68.0	62.1	52.2
Mining	*3.0	*2.5	*3.2	*3.1	*3.6	*2.2
Manufacturing	253.0	249.8	250.3	247.5	242.5	245.8
Electricity, gas and water supply	12.4	13.4	9.9	11.6	12.6	13.8
Construction	104.9	110.9	115.9	121.6	128.6	127.0
Wholesale trade	92.4	—	88.0	92.1	104.6	98.9
Retail trade	157.5	150.6	158.4	159.7	150.7	151.8
Accommodation, cafes and restaurants	35.2	37.0	37.6	31.9	39.4	40.7
Transport and storage	78.4	74.8	73.5	82.9	79.0	72.4
Communication services	25.2	24.5	22.4	22.1	22.2	25.0
Finance and insurance	43.3	42.8	46.3	42.3	40.0	43.5
Property and business services	121.3	130.8	130.7	130.1	134.8	148.8
Government administration and defence	33.4	29.2	38.4	37.4	36.1	35.7
Education	47.6	48.4	52.9	49.1	49.9	41.2
Health and community services	35.6	37.5	39.7	36.4	40.1	38.2
Cultural and recreational services	21.5	25.8	28.3	28.2	26.3	25.4
Personal and other services	48.4	47.0	42.5	38.3	45.5	39.2
Total	1 183.3	1 168.7	1 194.0	1 202.5	1 217.7	1 202.0
FEMALES						
Agriculture, forestry and fishing	35.2	28.0	30.8	35.4	31.8	26.4
Mining	*0.0	*0.0	*0.3	*0.3	*0.3	*0.8
Manufacturing	95.7	93.7	107.4	95.2	97.9	95.1
Electricity, gas and water supply	*2.1	*1.8	*1.9	*2.6	*2.9	*3.7
Construction	14.1	15.0	15.8	16.5	13.6	17.5
Wholesale trade	41.4	38.1	41.5	39.5	40.6	46.4
Retail trade	151.3	150.0	157.8	160.5	156.5	155.5
Accommodation, cafes and restaurants	49.9	49.0	47.9	46.3	49.3	48.9
Transport and storage	23.9	18.1	18.7	19.8	18.2	16.2
Communication services	14.0	16.8	15.9	14.2	12.4	13.8
Finance and insurance	49.8	47.8	42.2	40.5	48.1	54.5
Property and business services	94.6	107.6	101.5	105.3	108.3	108.0
Government administration and defence	41.7	39.3	41.9	34.1	35.9	40.0
Education	89.2	90.7	89.0	85.9	95.5	94.3
Health and community services	145.1	144.7	148.9	158.2	160.6	157.6
Cultural and recreational services	21.9	19.4	25.3	21.8	26.0	28.3
Personal and other services	39.6	31.4	35.0	37.9	37.1	42.6
Total	907.5	891.5	922.1	913.8	935.1	949.7
PERSONS						
Agriculture, forestry and fishing	103.4	86.8	86.7	103.4	93.9	78.6
Mining	*3.0	*2.5	*3.6	*3.4	*3.9	*3.1
Manufacturing	348.7	343.5	357.7	342.6	340.4	340.9
Electricity, gas and water supply	14.5	15.2	11.9	14.2	15.6	17.5
Construction	119.0	125.9	131.7	138.1	142.2	144.5
Wholesale trade	133.8	123.1	129.5	131.6	145.2	145.3
Retail trade	308.8	300.5	316.2	320.2	307.2	307.3
Accommodation, cafes and restaurants	85.1	86.0	85.5	78.1	88.7	89.6
Transport and storage	102.3	92.9	92.2	102.8	97.2	88.6
Communication services	39.1	41.3	38.3	36.3	34.6	38.8
Finance and insurance	93.1	90.6	88.5	82.8	88.1	98.0
Property and business services	215.9	238.5	232.2	235.4	243.0	256.8
Government administration and defence	75.1	68.5	80.3	71.5	72.0	75.8
Education	136.8	139.0	142.0	135.0	145.4	135.5
Health and community services	180.7	182.2	188.6	194.6	200.7	195.8
Cultural and recreational services	43.4	45.2	53.6	50.0	52.3	53.8
Personal and other services	88.0	78.4	77.6	76.2	82.6	81.8
Total	2 090.8	2 060.2	2 116.1	2 116.3	2 152.8	2 151.7

Source: Labour Force, Victoria (Cat. no. 6202.2) (quarterly).

5

JOB VACANCIES

Month	Vacancies all persons '000	Industry		Sector		Job vacancy rate %
		Manufacturing '000	Other '000	Public '000	Private '000	
1997						
May	11.5	*2.1	9.4	1.9	9.6	0.66
August	17.4	1.5	15.8	2.4	*14.9	0.97
November	*17.9	1.1	*16.8	2.3	*15.6	*0.97
1998						
February	24.0	*2.5	21.5	1.8	*22.1	1.20
May	20.2	2.2	18.0	1.5	18.7	1.00
August	17.6	0.8	16.8	1.9	15.7	0.84

Source: Job Vacancies and Overtime, Australia (Cat. no. 6354.0) (quarterly). Quarterly Survey of Job Vacancies and Overtime (Unpublished data).

6

INDUSTRIAL DISPUTES CAUSING STOPPAGE OF WORK

Month	Disputes		Employees involved		Manufacturing '000	Construction '000	Education, health, community services '000	Working days lost	
	Beginning in period no.	Total no.	Beginning in period '000	Total '000				Other industries '000	Total '000
1997									
May	16	19	7.6	9.8	11.6	0.6	0.4	3.9	16.5
June	7	13	2.0	5.1	3.5	0.2	1.2	2.5	7.4
July	11	14	9.0	9.4	2.3	0.5	—	7.2	10.0
August	11	14	1.9	4.0	0.2	0.9	0.3	4.0	5.4
September	14	18	4.8	7.3	11.2	1.0	0.1	6.0	18.3
October	10	12	52.8	53.7	33.7	18.6	1.2	6.6	60.1
November	8	13	22.1	46.6	18.9	10.4	14.8	2.0	46.0
December	6	11	4.0	17.2	9.4	3.7	—	4.2	17.3
1998									
January	5	7	0.5	1.1	0.9	0.3	0.0	0.3	1.5
February	8	10	17.2	17.6	7.8	1.3	14.3	4.0	27.4
March	6	11	5.7	14.1	5.4	14.7	4.4	0.5	25.0
April	11	17	6.3	9.1	2.6	4.0	0.5	0.7	7.8
May	5	7	42.1	55.7	15.1	23.1	13.9	1.3	53.4
June	8	10	3.0	19.5	0.2	17.7	0.0	0.4	18.3
July	14	18	3.5	4.3	5.3	0.7	0.1	0.1	6.1

Source: Industrial Disputes, Australia (Cat. no. 6321.0) (monthly).

7

AVERAGE WEEKLY EARNINGS OF EMPLOYEES

Month	Males			Females			Persons		
	Full-time adult ordinary time earnings	Full-time adult total earnings	All males total earnings	Full-time adult ordinary time earnings	Full-time adult total earnings	All females total earnings	Full-time adult ordinary time earnings	Full-time adult total earnings	All employees total earnings
	\$	\$	\$	\$	\$	\$	\$	\$	\$
1997									
February	726.60	782.50	687.70	611.90	625.90	462.40	687.70	729.40	590.00
May	736.90	789.10	676.20	618.50	636.70	453.90	693.90	733.80	572.70
August	754.20	812.70	695.20	625.80	643.40	460.40	708.10	751.90	587.20
November	748.50	807.60	714.90	632.90	653.10	463.60	708.10	753.60	600.60
1998									
February	762.20	823.10	722.00	634.90	650.70	477.70	716.80	761.60	610.40
May	767.60	825.30	701.50	646.30	660.40	470.40	724.80	767.00	596.30

Source: Average Weekly Earnings, States and Australia (Cat. no. 6302.0) (quarterly).

8

CONSUMER PRICE INDEX—MELBOURNE

Melbourne										
<i>Period</i>	<i>Food</i>	<i>Clothing</i>	<i>Housing</i>	<i>Household equipment and operation</i>	<i>Transportation</i>	<i>Tobacco and alcohol</i>	<i>Health and personal care</i>	<i>Recreation and education</i>	<i>All groups</i>	<i>Weighted average of eight capital cities—All groups</i>
1995-96	114.1	108.0	101.4	113.0	122.6	154.2	148.7	120.3	118.4	118.7
1996-97	118.6	108.4	95.0	114.7	124.0	158.5	157.1	123.3	119.9	120.3
1997-98	120.5	108.9	86.5	115.0	123.3	161.4	162.2	127.6	119.8	120.3
1997										
June qtr	119.6	108.4	90.1	115.0	123.8	159.4	162.7	124.8	119.9	120.2
September qtr	119.8	108.5	88.7	114.6	124.6	158.6	157.3	126.0	119.5	119.7
December qtr	119.7	109.2	86.9	115.4	124.4	161.2	162.2	126.2	119.8	120.0
1998										
March qtr	120.7	109.0	84.1	115.1	122.1	162.0	163.6	129.4	119.6	120.3
June qtr	121.6	108.9	86.2	115.1	122.0	163.9	165.8	128.8	120.3	121.0
September qtr	123.6	108.9	85.3	115.3	121.0	165.0	166.7	128.4	120.4	121.3

Note: Base of each group: year 1989-90=100.0

Source: Consumer Price Index (Cat. no. 6401.0) (quarterly).

9

PRICE INDEX OF MATERIALS USED IN BUILDING—MELBOURNE

<i>Group</i>	1998						<i>Weighted average of six state capital cities—Sep qtr 1998</i>
	<i>1995-96</i>	<i>1996-97</i>	<i>1997-98</i>	<i>Mar qtr</i>	<i>Jun qtr</i>	<i>Sep qtr</i>	
House building							
All groups	115.4	115.3	117.1	117.6	118.0	118.6	119.4
Other than house building							
Structural timber	116.1	110.1	115.6	115.8	116.8	118.3	125.8
Clay bricks	112.1	113.1	117.9	119.6	119.7	119.7	117.9
Ready mix concrete	118.6	111.5	111.4	111.5	111.3	112.4	107.0
Precast concrete products	108.1	110.3	115.7	115.0	123.5	123.6	123.4
Steel decking and cladding	109.9	109.2	109.4	108.3	108.3	108.3	114.7
Structural steel	100.9	104.2	104.9	104.7	104.8	104.8	113.3
Reinforcing steel bar, mesh, etc.	102.7	100.7	100.8	100.8	100.8	100.3	110.7
Aluminium windows	100.8	100.6	100.0	99.2	99.7	99.7	109.8
Fabricated steel products	113.1	116.7	120.0	120.6	120.6	124.6	117.4
Builders' hardware	114.5	116.5	119.6	119.8	120.3	121.4	122.2
Sand and aggregate	114.6	115.9	116.3	116.0	116.4	119.6	121.7
Carpet	101.6	101.6	102.6	102.9	101.5	101.9	103.3
Paint and other coatings	141.2	145.8	144.7	143.5	148.3	148.6	138.5
Non-ferrous pipes and fittings	112.2	111.5	113.0	110.2	109.4	109.4	134.0
All groups excluding electrical materials and mechanical services	109.7	110.0	111.0	110.9	111.5	112.0	114.5
All electrical materials	119.4	112.0	109.8	110.3	108.6	108.6	115.6
All mechanical services	114.1	115.0	114.9	114.6	115.2	116.2	116.7
All plumbing materials	118.9	120.1	122.8	122.8	122.3	123.0	128.4
All groups	111.1	110.9	111.4	111.4	111.8	112.4	114.8

Note: Base of each index: year 1989-90=100.0.

Source: Price Index of Materials Used in Building Other Than House Building, Six State Capital Cities (Cat. no. 6407.0) (quarterly). Price Index of Materials Used in House Building, Six State Capital Cities (Cat. no. 6408.0) (quarterly).

10

LIVESTOCK SLAUGHTERINGS

Period	Cattle	Calves	Sheep	Lambs	Pigs	Chickens(a)
	'000	'000	'000	'000	'000	'000
1994-95	1 467.3	635.6	3 229.6	6 303.2	1 196.9	77 193.1
1995-96	1 523.6	589.8	2 488.0	5 897.7	1 142.1	85 410.9
1996-97 p	1 675.9	697.3	2 806.6	5 978.9	1 197.3	86 732.6
1997 p						
July	148.3	105.2	192.3	541.0	118.8	8 263.5
August	132.2	185.5	195.8	452.2	104.2	7 152.4
September	129.4	178.5	234.5	537.6	108.1	7 546.2
October	147.3	80.0	322.7	582.7	107.9	8 442.6
November	140.6	28.3	310.1	565.1	98.9	7 187.8
December	163.9	11.8	340.5	583.1	115.7	8 240.7
1998 p						
January	165.3	11.1	339.3	539.2	104.7	8 063.1
February	159.4	8.3	419.6	473.3	102.4	7 695.9
March	158.9	21.3	365.5	506.8	120.4	8 175.4
April	163.2	33.7	268.6	547.4	120.8	8 538.9
May	141.2	41.9	183.5	478.4	128.3	7 596.2
June	146.9	64.4	203.1	481.0	134.5	7 239.7
July	2 156.4	106.4	219.8	581.4	135.1	n.a.
August	123.3	164.1	192.0	192.0	121.2	n.a.
September	142.6	159.2	216.1	216.1	135.4	n.a.

(a) From July 1998 frequency of data collection for chicken statistics changed from monthly to quarterly.

Source: *Livestock Products, Australia (Cat. no. 7215.0) (monthly prior to July 1998 and quarterly from September 1998) Unpublished data.*

11

MEAT PRODUCTION

Period	Meat (carcass weight)					Dressed weight of chickens(a)
	Beef	Veal	Mutton	Lamb	Pigmeat	
	tonnes	tonnes	tonnes	tonnes	tonnes	tonnes
1994-95	335 059	14 428	64 440	111 202	84 728	109 515
1995-96	348 649	12 009	50 910	110 172	83 052	127 736
1996-97 p	373 818	14 293	55 545	111 403	85 872	129 930
1997 p						
July	31 773	2 060	3 733	10 112	8 594	13 039
August	28 256	3 658	3 773	8 498	7 596	10 842
September	28 241	3 565	4 663	10 001	7 943	11 910
October	31 971	1 618	6 521	10 759	8 003	13 479
November	30 971	638	6 189	10 558	7 211	11 500
December	35 616	286	6 861	11 001	8 100	13 215
1998 p						
January	35 728	281	6 505	10 135	7 577	13 076
February	35 579	205	8 193	8 753	7 393	12 372
March	35 013	454	6 917	9 248	8 702	13 438
April	34 408	705	4 872	10 294	8 840	13 519
May	30 084	839	3 500	9 114	9 310	12 491
June	31 220	1 319	3 873	9 063	10 035	11 548
July	34 634	2 035	4 318	11 151	10 106	n.a.
August	27 441	3 230	3 814	10 376	8 812	n.a.
September	31 541	3 172	4 391	11 928	9 919	n.a.

(a) From July 1998 frequency of data collection for chicken statistics changed from monthly to quarterly.

Source: *Livestock Products, Australia (Cat. no. 7215.0) (monthly prior to July 1998 and quarterly from September 1998) (Unpublished data).*

Period	New dwelling units(a)							Alterations and additions to residential buildings	Non-residential building(b)		
	Private sector		Public sector		Total(c)		Conversions etc.(d)		Private sector	Total	Total all building
	no.	\$m	no.	\$m	no.	\$m			no.	\$m	\$m
MELBOURNE STATISTICAL DIVISION											
1995-96	15 676	1 624.3	1 068	86.5	16 744	1 710.8	617	467.2	1 352.5	1 934.5	4 112.5
1996-97	19 670	2 185.2	447	35.7	20 117	2 221.0	1 189	592.3	1 527.1	2 303.0	5 116.2
1997-98	26 500	3 027.1	723	56.0	27 223	3 083.1	1 029	701.2	2 168.2	2 593.0	6 377.3
1997											
June	1 746	214.7	4	0.2	1 750	214.9	300	74.2	103.0	351.4	640.4
July	2 010	218.1	38	1.9	2 048	220.0	25	51.1	132.1	176.2	447.3
August	2 490	256.0	78	7.4	2 568	263.4	55	54.2	122.8	142.0	459.7
September	2 174	241.9	61	4.2	2 235	246.1	222	68.5	173.5	192.1	506.7
October	1 807	203.9	77	7.0	1 884	210.9	64	69.0	180.0	238.3	518.2
November	2 451	291.8	71	4.9	2 522	296.7	52	49.1	195.8	213.6	559.5
December	2 072	232.1	71	6.1	2 143	238.2	60	43.6	440.7	450.6	732.3
1998											
January	1 858	230.9	23	1.5	1 881	232.4	74	44.2	174.2	203.1	479.7
February	2 034	219.8	25	2.0	2 059	221.8	65	56.1	137.7	165.8	443.6
March	2 633	288.4	11	0.7	2 644	289.1	77	69.3	104.0	117.6	476.0
April	2 487	297.1	55	3.7	2 542	300.7	47	66.1	172.9	254.2	621.0
May	2 247	267.8	122	9.3	2 369	277.1	224	72.9	223.9	265.6	615.5
June	2 237	279.3	91	7.4	2 328	286.7	64	57.1	110.6	173.9	517.7
July	2 225	257.0	45	3.0	2 270	260.0	134	62.7	142.1	162.2	484.9
August	2 376	290.3	51	4.2	2 427	294.5	192	69.5	314.2	335.2	699.2
TOTAL VICTORIA											
1995-96	21 643	2 171.1	1 401	108.7	23 044	2 279.7	663	590.1	1 721.6	2 452.4	5 322.3
1996-97	26 014	2 793.3	596	46.7	26 610	2 839.9	1 240	728.5	1 879.7	2 839.8	6 408.2
1997-98	34 178	3 811.3	1 171	88.6	35 349	3 899.8	1 089	858.5	2 476.9	3 064.5	7 822.8
1997											
June	2 255	264.5	11	0.6	2 266	265.0	302	84.6	120.3	382.1	731.8
July	2 563	275.5	42	2.3	2 605	277.8	27	62.9	161.8	227.9	568.6
August	3 084	316.0	79	7.7	3 163	323.7	57	65.7	159.5	184.5	573.9
September	2 824	307.6	113	7.2	2 937	314.8	225	83.6	209.9	242.2	640.6
October	2 505	273.8	112	9.2	2 617	283.0	64	84.4	204.8	279.2	646.7
November	3 083	354.6	110	7.5	3 193	362.1	54	60.1	213.5	247.3	669.5
December	2 675	293.5	90	7.9	2 765	301.4	65	55.6	456.7	470.2	827.2
1998											
January	2 305	278.0	57	3.7	2 362	281.7	77	56.7	201.7	234.1	572.6
February	2 620	278.5	71	6.0	2 691	284.5	66	67.3	158.3	222.6	574.5
March	3 413	369.6	49	3.4	3 462	373.0	84	83.1	129.9	148.5	604.6
April	3 154	363.8	110	7.2	3 264	371.0	49	77.8	201.2	302.7	751.5
May	2 942	341.0	159	12.6	3 101	353.6	255	89.9	243.4	292.3	735.7
June	3 010	359.2	179	13.8	3 189	373.0	66	71.3	136.4	213.0	657.3
July	2 850	321.5	75	4.8	2 925	326.3	138	72.9	174.0	196.7	595.9
August	3 000	355.6	67	5.3	3 067	360.9	196	78.6	340.5	366.4	806.0

(a) Valued at \$10,000 and over.

(b) Valued at \$50,000 and over.

(c) Excludes dwelling units created as a result of conversions or construction of non-residential buildings.

(d) Dwelling units created as a result of conversions or construction of non-residential buildings.

Source: Building Approvals, Victoria (Cat. no. 8731.2) (monthly).

NEW HOUSES AND OTHER RESIDENTIAL BUILDINGS, NUMBER OF DWELLING UNITS

Period	New houses				New other residential buildings			
	Approved	Commenced	Under Construction	Completed	Approved	Commenced	Under Construction	Completed
	no.	no.	no.	no.	no.	no.	no.	no.
1995-96	18 889	19 399	8 066	21 883	4 155	4 276	3 906	3 086
1996-97	19 805	18 652	8 937	17 613	6 805	6 047	4 151	5 727
1997-98	27 937	25 947	12 503	22 271	7 412	7 509	5 095	6 497
1997								
March qtr	4 924	4 597	8 176	3 997	1 874	1 560	4 046	1 553
June qtr	5 794	5 463	8 937	4 687	1 531	1 527	4 151	1 400
September qtr	6 732	5 717	9 537	5 102	1 973	1 822	3 874	2 036
December qtr	6 821	7 088	10 720	5 842	1 754	1 958	4 104	1 725
1998								
March qtr	6 577	r6034	r11512	r5242	1 938	r1924	r4806	r1220
June qtr	7 807	7 108	12 503	6 085	1 747	1 805	5 095	1 516

Source: Building Activity, Victoria (Cat. no. 8752.2) (quarterly).

Period	Residential buildings		Non-residential buildings						Total
	New	Alterations and additions	Shops	Factories	Offices	Education	Health	Other	
COMMENCED									
1995-96	2 486.2	679.7	444.3	249.2	393.5	330	108.4	953.5	5 644.8
1996-97	2 692.2	761	348.2	343.8	508.5	410.3	303.6	1 003.3	6 371.1
1997-98	3 817	890.6	577.8	240	426.2	269.1	247.4	1 383	7 851.1
1997									
March qtr	666.8	188.9	88.3	93.2	114	59.4	48.5	228.4	1 487.5
June qtr	789.7	235	97.2	74.4	104.3	214.1	103.4	369.6	1 987.6
September qtr	845.8	228.4	80.4	58.3	123.8	55.2	46.1	245.8	1 683.7
December qtr	1 050.3	223.9	124.6	84.3	93.8	70.6	93.9	601.3	2 342.4
1988									
March qtr	r870.9	r187.0	r134.1	r54.1	r91.8	r65.7	r42.6	r327.7	r1774.0
June qtr	1 050.0	251.4	238.7	43.3	116.8	77.7	64.9	208.3	2 051.0
UNDER CONSTRUCTION AT END OF PERIOD									
1995-96	1 472.5	339.4	235.5	141.4	139.2	248.1	123.9	1 390.9	4 091.0
1996-97	1 582.3	358.5	284.6	214.9	233.4	310.0	236.2	1 741.7	4 961.6
1997-98	2 263.5	420.5	393.5	143.2	240.0	318.8	277.4	1 456.9	5 513.7
1997									
March qtr	1 456.0	309.3	237.7	227.1	228.6	188.1	172.5	1 801.3	4 620.4
June qtr	1 582.3	358.5	284.6	214.9	233.4	310.0	236.2	1 741.7	4 961.6
September qtr	1 669.2	388.8	175.4	167.4	193.9	343.2	245.6	920.7	4 104.1
December qtr	1 836.8	399.4	185.5	160.1	195.5	365.7	303.5	1 304.1	4 750.6
1988									
March qtr	r2040.0	r366.6	r210.4	r157.6	r208.5	r307.4	r244.8	r1442.2	r4977.5
June qtr	2 263.5	420.5	393.5	143.2	240.0	318.8	277.4	1 456.9	5 513.7
COMPLETED									
1995-96	2 489.6	689.0	715.1	249.9	514.1	302.2	234.7	844.4	6 038.9
1996-97	2 617.6	768.5	364.8	295.6	404.0	342.0	194.6	1 106.7	6 093.8
1997-98	3 194.6	860.4	467.4	336.2	448.7	282.9	207.9	1 732.6	7 530.7
1997									
March qtr	616.3	168.6	121.2	56.9	100.5	88.1	34.8	271.0	1 457.4
June qtr	684.7	195.3	52.0	86.5	104.6	95.0	41.5	439.9	1 699.5
September qtr	775.5	202.9	193.1	114.5	169.9	30.8	39.6	1 101.1	2 627.5
December qtr	886.3	219.3	114.6	94.8	102.1	53.7	39.3	236.9	1 747.1
1988									
March qtr	r681.2	r227.7	r99.6	r61.9	85.6	r131.1	r96.8	r201.6	r1585.7
June qtr	851.6	210.5	60.1	65.0	91.0	67.2	32.1	192.8	1 570.4

Source: Building Activity, Victoria (Cat. no. 8752.2) (quarterly).

15

PRIVATE NEW CAPITAL EXPENDITURE, BY SELECTED INDUSTRIES AND TYPE OF ASSET

Period	Selected industries				Type of asset	
	Mining	Manufacturing	Other selected industries	Total	New buildings and structures	Equipment, plant and machinery
	\$m	\$m	\$m	\$m	\$m	\$m
ACTUAL						
1996-97	758	3 447	7 290	11 496	3 379	8 117
1997-98	861	3 381	6 900	11 142	2 863	8 279
1997						
March qtr	162	772	1 613	2 547	789	1 758
June qtr	170	880	2 176	3 226	761	2 465
September qtr	164	775	1 563	2 502	694	1 807
December qtr	295	906	1 898	3 099	784	2 314
1998						
March qtr r	163	756	r 1 527	r 2 446	r 615	r 1 831
June qtr	239	944	1 913	3 096	769	2 327
EXPECTED						
1997-98	1 265	3 244	6 263	10 772	2 997	7 775
1998-99	872	2 400	5 644	8 915	3 038	5 877

Source: State Estimates of Private New Capital Expenditure (Cat. no. 5646.0) (quarterly).

16

COMMERCIAL FINANCE COMMITMENTS

Month	Fixed loan facilities						Type of lender			
	Construction	Purchase of real property	Purchase of plant and equipment	Wholesale	Other	Total	Revolving credit facilities	Total commitments	Banks	All other lenders
	\$m	\$m	\$m	\$m	\$m	\$m	\$m	\$m	\$m	\$m
1997										
June	75.4	408.9	172.8	120.2	824.8	1 602.2	2 232.2	3 834.4	2 929.6	904.8
July	134.1	439.1	178.7	148.9	1 162.2	2 063.0	2 470.0	4 533.0	3 757.0	776.0
August	98.8	411.9	168.5	93.7	692.8	1 465.7	2 193.6	3 659.3	2 827.0	832.3
September	153.7	500.3	179.2	124.4	583.9	1 541.6	2 560.3	4 101.9	3 545.9	556.0
October	93.0	549.4	279.7	222.0	471.8	1 615.9	2 512.8	4 128.7	3 180.7	948.0
November	77.4	463.8	138.3	81.2	525.1	1 285.9	1 475.9	2 761.9	2 279.0	482.9
December	167.1	539.6	164.7	123.8	1 729.9	2 725.0	1 862.3	4 587.3	3 996.0	591.3
1998										
January	76.8	483.4	121.9	83.1	r 372.7	1 137.8	1 359.6	2 497.4	2 154.8	342.6
February	116.4	425.5	119.7	118.4	722.3	1 502.3	2 150.7	3 653.0	2 757.5	895.5
March	220.0	446.7	161.1	91.2	505.5	r 1 424.6	1 773.0	3 197.7	r 2 508.2	r 689.5
April	75.1	r 418.1	r 121.5	90.5	744.2	r 1 449.3	2 033.0	r 3 482.4	2 496.7	r 985.6
May	124.6	r 489.7	117.5	157.3	r 1 263.6	r 2 152.7	1 592.5	r 3 745.2	3 129.8	r 615.4
June	103.8	628.8	142.4	115.5	1 163.6	2 154.1	1 440.3	3 594.4	3 089.9	504.6
July	112.8	527.1	171.6	100.2	1 112.3	2 023.9	2 243.1	4 267.0	3 570.6	696.4
August	87.4	399.9	131.7	169.3	454.1	1 242.3	2 182.6	3 424.9	2 924.0	500.9

Source: ABS Time Series Service (AUSSTATS).

17

SECURED HOUSING FINANCE COMMITMENTS, DWELLING UNITS

Month	Original series		Seasonally adjusted		Trend estimates	
	no.	\$m	no.	\$m	no.	\$m
1997						
June	10 081	1 022	9 784	992	9 733	982
July	10 199	1 039	9 564	955	9 803	1 003
August	9 890	1 031	9 777	1 040	9 858	1 022
September	10 063	1 060	10 138	1 047	9 926	1 041
October	10 529	1 109	9 927	1 051	10 025	1 059
November	9 583	1 019	10 074	1 091	10 124	1 071
December	10 192	1 090	10 086	1 054	10 157	1 072
1998						
January	8 187	878	10 393	1 089	r 10 128	1 066
February	9 961	1 028	10 242	1 076	r 10 090	r 1 061
March	10 197	1 080	9 872	1 027	r 10 056	r 1 059
April	9 780	1 011	9 687	1 017	r 10 011	r 1 059
May	9 986	1 063	9 709	1 070	r 9 951	r 1 059
June	r 11 123	r 1 183	r 10 701	1 125	r 9 871	r 1 058
July r	10 629	1 155	9 945	1 058	9 762	1 053
August	9 212	1 015	8 933	990	9 649	1 047

Source: *Housing Finance for Owner Occupation, Australia (Cat. no. 5609.0) (monthly)*.

18

RETAIL TURNOVER, BY INDUSTRY (EXCLUDING MOTOR VEHICLES, PARTS, PETROL, ETC.)

Month	Food retailing	Department stores	Clothing and soft good retailing	Household good retailing	Recreational good retailing	Other retailing	Hospitality and services	Total
	\$m	\$m	\$m	\$m	\$m	\$m	\$m	\$m
1997								
July	1 069.4	226.3	164.2	331.4	139.6	254.6	305.0	2 490.5
August	1 069.6	198.2	148.1	336.7	144.1	268.8	307.6	2 473.0
September	1 047.4	226.6	154.5	325.1	151.6	272.7	304.8	2 482.6
October	1 124.7	232.6	168.7	372.2	162.6	271.5	328.4	2 660.7
November	1 101.1	272.3	178.6	373.3	169.4	264.6	320.6	2 679.9
December	1 256.5	465.3	245.5	482.2	250.5	383.6	371.9	3 455.3
1998								
January	1 128.9	214.2	155.6	320.1	158.6	254.7	339.4	2 571.5
February	1 022.6	174.2	134.6	280.6	142.7	236.5	297.0	2 288.3
March	1 085.9	208.9	163.8	300.6	150.8	272.9	339.1	2 522.0
April	1 079.1	246.6	189.2	288.6	139.6	281.7	340.2	2 565.1
May	1 093.9	238.9	198.6	304.9	137.6	271.5	344.5	2 589.8
June	1 054.9	211.7	183.6	298.0	135.8	264.8	324.3	2 473.1
July	1 144.1	255.2	200.4	312.9	151.8	284.7	348.5	2 697.6
August	1 118.3	213.4	180.8	303.6	161.5	283.8	357.3	2 618.6
September	1 113.8	228.5	184.4	319.7	167.9	288.7	356.8	2 659.9

Source: *Retail Trade, Australia (Cat. no. 8501.0) (monthly)*.

19

EXPORTS AND IMPORTS, BY SECTIONS OF THE AUSTRALIAN EXPORT AND IMPORT CLASSIFICATIONS

Section	1997/98		3 months ending Sep 98	
	Imports	Exports	Imports	Exports
	\$m	\$m	\$m	\$m
0 Food and live animals chiefly for food	1 171	3 604	311	939
1 Beverages and tobacco	127	159	33	51
2 Crude materials, inedible (except fuels)	566	1 867	164	346
3 Mineral fuels, lubricants, and related materials	774	938	239	190
4 Animal and vegetable oils, fats and waxes	92	111	23	24
5 Chemicals and related products, n.e.c.	2 958	915	785	238
6 Manufacturing goods classified chiefly by material	4 317	2 366	1 218	661
7 Machinery and transport equipment	12 436	2 970	3 475	736
8 Miscellaneous manufactured articles	5 007	1 977	1 545	255
9 Commodities and transactions of merchandise trade, n.e.c.	1 391	2 026	492	899
Total	28 840	15 931	8 286	4 338

Source: Foreign Trade Australia: Fastraccs Database.

20

OVERSEAS TRADE, MAJOR TRADING PARTNERS(A)

Country	1996/97		1997/98		3 months ending Sep 1998	
	Imports	Exports	Imports	Exports	Imports	Exports
	\$m	\$m	\$m	\$m	\$m	\$m
Belgium-Luxembourg	242	66	243	91	60	37
Brazil	125	81	134	76	29	18
Canada	394	123	390	122	106	30
China	1 755	658	2 154	624	475	129
Fiji	119	236	133	245	46	51
Finland	169	8	193	12	47	3
France	711	162	631	168	161	30
Germany	1 923	280	2 116	268	615	96
Hong Kong	267	812	338	1 073	138	226
India	231	239	256	188	83	65
Indonesia	507	428	637	325	413	46
Italy	832	320	963	396	278	72
Japan	3 097	1 523	3 847	1 683	1 066	411
Korea, Republic of	671	2 098	878	1 039	250	163
Malaysia	508	669	668	517	208	92
Mexico	64	52	80	77	22	22
Netherlands	237	39	254	81	69	29
New Zealand	1 247	2 140	1 311	1 551	336	399
Pakistan	75	55	97	87	22	9
Papua New Guinea	232	269	163	235	11	50
Philippines	108	372	135	388	41	96
Saudi Arabia	203	168	106	210	26	68
Singapore	468	893	490	989	130	191
South Africa	100	292	147	272	34	64
Sweden	502	65	585	41	119	6
Switzerland	241	66	277	24	88	7
Taiwan	792	696	852	1 655	250	206
Thailand	335	412	399	341	120	78
United Kingdom	1 635	416	1 694	453	542	682
United States of America	5 944	958	7 024	1 603	1 794	374
Other and unknown	1 359	1 710	1 645	2 097	707	588
Total	25 093	16 306	28 840	15 931	8 286	4 338

^a The list of countries in this table reflects the volume of trade with Victoria. Information about Victoria's trade with other countries is available on request.

Source: Overseas Trade: Fastraccs Database.

21

VALUE OF OVERSEAS TRADE—VICTORIA AND AUSTRALIA

Period	Victoria			Australia		
	Imports	Exports	Excess of exports	Imports	Exports (including re-exports)	Excess of exports
	\$m	\$m	\$m	\$m	\$m	\$m
1995/96	24 663	15 410	-9 253	77 792	76 005	-1 787
1996/97	25 093	16 306	-8 787	78 998	78 932	-66
1997/98	28 840	r 15 932	r -12 908	r 90 670	r 87 762	r -2 908
1997						
June	2 064	1 322	-742	6 876	6 838	-38
July	2 361	1 286	-1 075	7 419	7 131	-288
August	2 264	1 183	-1 081	7 048	7 186	138
September	2 338	1 344	-994	7 355	7 205	-150
October	2 604	1 420	-1 184	7 944	7 628	-316
November	2 263	1 541	-722	7 184	7 634	450
December	2 425	1 509	-916	7 915	7 821	-94
1998						
January	2 268	1 093	-1 175	7 109	6 303	-806
February	2 294	1 377	-917	6 956	6 668	-288
March	2 618	1 356	-1 262	8 188	7 310	-878
April	2 362	1 212	-1 150	7 438	7 197	-241
May	2 387	1 402	-985	7 658	r 7 947	r 289
June	2 655	1 208	-1 447	8 459	r 7 732	r -727
July	2 844	1 379	-1 465	r 8 913	r 7 475	r -1 438
August	r 2 669	1 541	r -1 128	r 8 156	r 7 749	r -407
September	r 2 773	r 1 418	r -1 355	r 8 563	r 7 603	r -960

Source: Overseas Trade: Fasttraccs Database.

22

TOURIST ACCOMMODATION

Quarter ended	Hotels, motels, guest houses and serviced apartments(a)						
	Establishments	Guest rooms	Bed spaces	Room nights occupied	Room occupancy rate	Persons employed	Takings from accommodation
	no.	no.	no.	'000	%	no.	\$'000
1997							
March	647	26 667	73 512	1 494.3	62.3	14 842	165 101
June	650	27 170	75 353	1 365.9	55.7	22 630	145 443
September	663	27 476	76 123	1 410.1	55.8	22 746	160 195
December	661	27 616	76 010	1 484.0	58.4	21 478	164 141
1998							
March	668	28 603	77 836	1 534.1	60.1	21 322	175 596
June	669	28 850	78 637	1 415.7	53.9	20 754	153 243

(a) Comprising establishments with 15 or more rooms or units.

Source: Tourist Accommodation, Australia (Cat. no. 8635.0).

SELF-HELP ACCESS TO STATISTICS

PHONE Call 1900 986 400 for the latest statistics on CPI, Labour Force, Earnings, National Accounts, Balance of Payments and other topics. (Call cost is 75c per minute)

INTERNET <http://www.abs.gov.au>

LIBRARY A range of ABS publications is available from public and tertiary libraries Australia wide. Contact your nearest library to determine whether it has the ABS statistics you require.

WHY NOT SUBSCRIBE?

PHONE +61 1300 366 323

FAX +61 3 9615 7848

CONTACTING THE ABS

ABS provides a range of services, including: a telephone inquiry service; information consultancy tailored to your needs; survey, sample and questionnaire design; survey evaluation and methodological reviews; and statistical training.

<i>INQUIRIES</i>	<i>By phone</i>	<i>By fax</i>
Canberra	02 6252 6627	02 6253 1404
Sydney	02 9268 4611	02 9268 4668
Melbourne	03 9615 7755	03 9615 7798
Brisbane	07 3222 6351	07 3222 6283
Perth	08 9360 5140	08 9360 5955
Adelaide	08 8237 7400	08 8237 7566
Hobart	03 6222 5800	03 6222 5995
Darwin	08 8943 2111	08 8981 1218

POST Client Services, ABS, PO Box 10, Belconnen, ACT 2616

EMAIL client.services@abs.gov.au



2130320010989
ISSN 0158-202X

RRP \$16.00